

# ARTIFICIAL INTELLIGENCE & HEALTHCARE

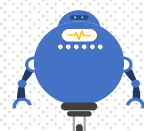
Projected savings of **up to \$10 Trillion** annually for the global **healthcare** industry by **2026**

## AI MARKET GROWTH IS DRIVING CONTINUOUS INVESTMENTS

AI IN GLOBAL HEALTHCARE  
**MARKET GROWTH**  
(2016 – 2024P)

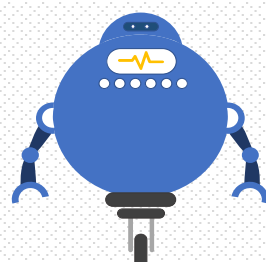
CAGR  
**39%**

**\$0.7 BN**



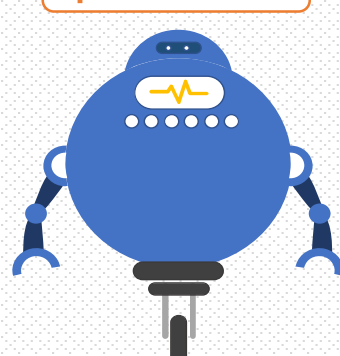
2016

**\$8.0 BN**



2022P

**\$10.0+ BN**



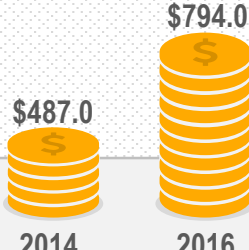
2024P

Global technology companies are further fueling AI growth within Healthcare



## VC FUNDING

(MILLION USD)



VC funding for AI in healthcare increased over 60% during 2014-2016 and is driving AI innovation in imaging and diagnostics, virtual assistants, remote monitoring, and in-hospital care space

## AI IS ALREADY IMPACTING EVERY ASPECT OF HEALTHCARE DELIVERY – FROM DRUG DISCOVERY TO PRACTICE MANAGEMENT

### DRUG DISCOVERY AND DEVELOPMENT



Clinical Trials | Analyze historical data, predict site performances and recruit eligible patients

EXAMPLE SUPPLIERS | **XtalPi** | **Exscientia**

### MEDICAL IMAGING AND DIAGNOSTIC

Diagnostic error prevention | Visual pattern recognition | Medical imaging insights | Early diagnostic

EXAMPLE SUPPLIERS | **tricog** | **PathAI**

### PATIENT CARE



Automated diagnosis & prescription | Patient data analytics and insights | Personalized medications, treatment and care | Robot-assisted surgeries | Virtual nursing assistants

EXAMPLE SUPPLIERS | **innoPLCXS** | **AiCure**

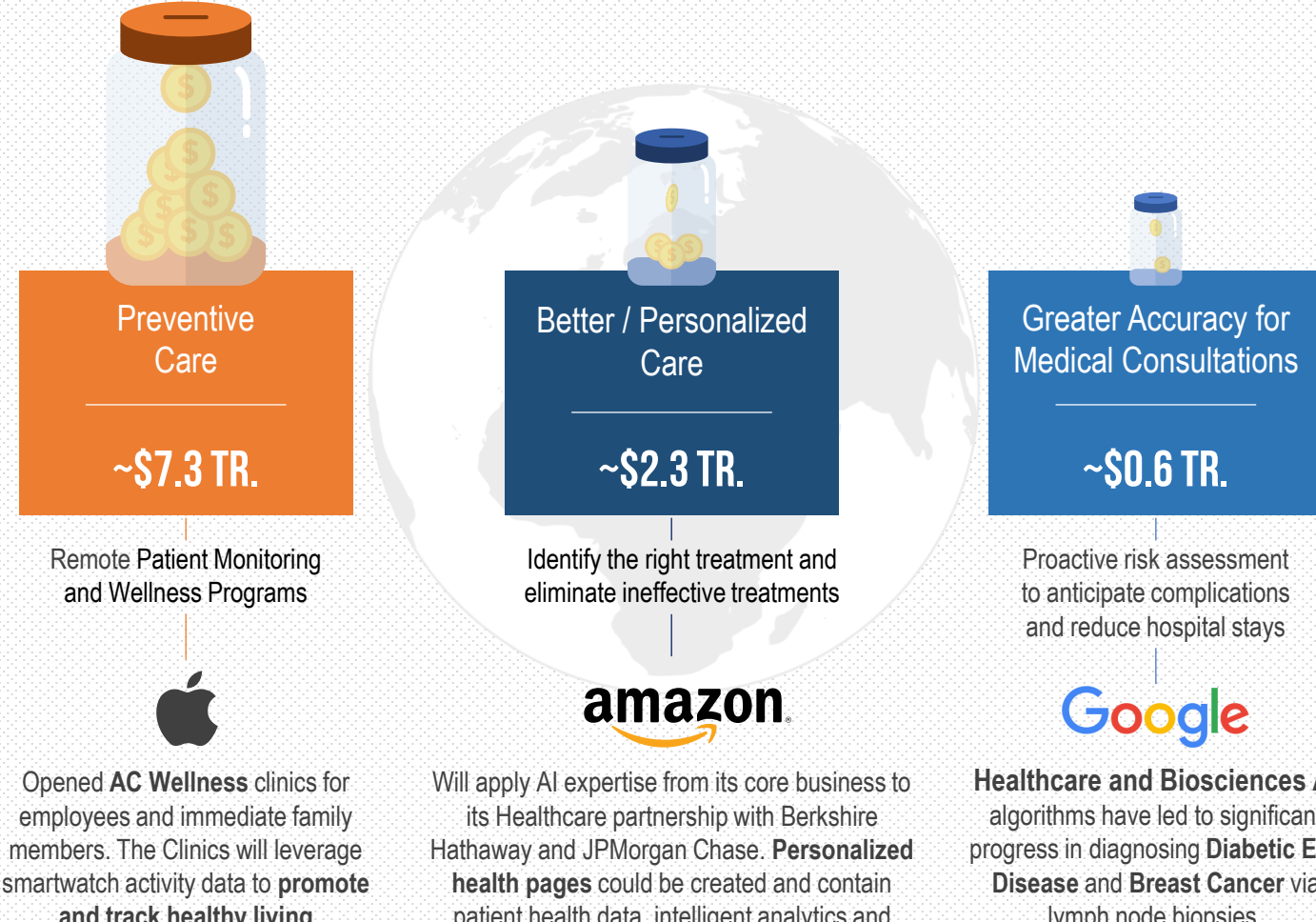
### PRACTICE MANAGEMENT

Administrative workflow assistance | Clinical records management

EXAMPLE SUPPLIERS | **mModal** | **RX PRISM**

## AI IS PROJECTED TO SAVE UPWARDS OF \$10 TRILLION GLOBALLY

Greatest AI savings projected to occur in three primary areas:



## PHARMA Companies' AI Programs & Initiatives

### COLLABORATIONS



### BENEFIT

IBM Watson is applied to Pfizer's immuno-oncology research, helping to identify new cancer drug targets and therapies

Exscientia will help Sanofi discover and develop bispecific small-molecule drugs for the treatment of metabolic diseases (such as diabetes)

Roche is using GNS healthcare's machine learning solutions to turn biomedical data into solutions and novel therapies for cancer treatments

Exscientia AI-enabled platform will help discover small molecules for GSK pre-clinical candidates

Novartis expects IBM Watson to improve advanced breast cancer outcomes through cognitive computing of real-world patient data

Grail Insights is helping many clients navigate the future of healthcare. Want to learn more about AI and other Healthcare influences? Contact us at [hello@grailinsights.com](mailto:hello@grailinsights.com)

